



James "Jim" Ray Lyle

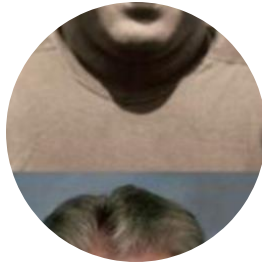
FEB 19, 1927 - OCT 30, 2010



Scan to Visit

Table of Contents

Obituary	Page 3
Tribute Wall	Page 4



James "Jim" Ray Lyle

FEB 19, 1927 - OCT 30, 2010

James Ray "Jim" Lyle of Mandeville, LA peacefully passed away Saturday, October 30, 2010, after a courageous battle with pancreatic cancer.

He was preceded in death by his parents, Hershel Brown Lyle and Sarah Katherine Beaty Lyle, five brothers and three sisters. A native of El Dorado, Arkansas, Jim "Egg" served in the U.S. Army during WWII. After his honorable discharge from service, he attended LSU on a football scholarship where he played Defensive End from 1947 – 1950 under Coach Gaynell Tinsley. Jim was a member of the 1949 "Cinderella Team" that played in the Sugar Bowl against Oklahoma in January 1950. Upon graduation from LSU he began a career in the building industry where he worked for Georgia-Pacific Corporation until retirement in 1989.

Survivors include his wife of 61 years, Juanda Corbin Lyle; three children, Lynn C. Lyle (Sheri) of Bossier City, LA, James Randolph "Randy" Lyle (Liz) of Atlanta, GA and Terri Lyle-Landry (Bobby) of Mandeville, LA; one sister, Dorothy Shepperson of El Dorado, AR; five grandchildren and two great-grandchildren.

A Memorial Service and Eucharist will be held on Thursday, November 4, 2010 at St. Michael's Episcopal Church, 4499 Sharp Road, Mandeville, LA at 3:00 PM. Visitation will begin at 2:00 PM at the Church.

The family wishes to thank the members of St. Joseph Hospice for their love and care during Jim's illness.

In lieu of flowers contributions may be made to St. Joseph Hospice Foundation, 17732 Highland Road, Suite G, Baton Rouge, LA 70810 or online at www.stjosephhospicefoundation.org/donations.



Tribute Wall

James "Jim" Ray Lyle

FEB 19, 1927 - OCT 30, 2010

SS

Sharyl Schaepe posted:

Dear Terry and family, We were sorry to learn of the death of your father. We are never ready to let go of our loved ones no matter how much time we have shared. We pray your father's memories will bring comfort and joy and that God's loving hands will embrace you today and always. All our love, Gary and Sharyl

November 4 at 8:08 AM

DV

Doll And Ken Vines posted:

To the entire Lyle family: We wish to express our condolences you each of you during this difficult time. Please know that you will be in our hearts, thoughts and prayers. And to Lynn, Sherri, and Matt: We love you. I am sorry we are unable to attend the services, but know that we are with you in spirit. If there is anything we can do - don't hesitate to contact us. Love you, Doll & Ken Vines

November 3 at 9:41 AM

TK

Tammy Kennedy posted:

My thoughts and prayers are with you.

November 3 at 5:18 AM

GH

Greta Honsberger posted:

Teri, As I read about your father I had to smile imagining this larger than life man. What a wonderful life he lead. I know you are proud to be his daughter. I am sorry for the emptiness you must be feeling now. My prayer is that you and your family feel a little more at peace with each passing moment. Please let me know if there is anything at all I can do make life a easier. Love, Greta

November 2 at 2:43 PM

BB

Buck Buchanan posted:

Over my years at Georgia-Pacific I have many fond (and funny) memories of "Big Jim."

November 1 at 6:22 AM



Tribute Wall

James "Jim" Ray Lyle

FEB 19, 1927 - OCT 30, 2010



Kim Oden posted:

Hey Lyle Family - Johnnie O has Jim so busy now that he is dizzy! We are thinking of you and praying for you and how wonderful is it to think that the next time we see him, it'll be forever....FOREVER!! He's just getting everything ready and what you bet there is a workshop/workout place/and golf course involved! I love each of you and I'll see you on Thursday. Love, Kim

November 1 at 5:14 AM



Memories only last if you share them

Join us in honoring James by contributing to a collection of shared memories.



Scan to Visit